

Bardstown Cable Internet Self-Install Instructions

- 1) Check computer for an active Ethernet port or Ethernet Network Interface Card (NIC)
If you do not have a Ethernet port or Ethernet Network Interface Card (NIC), you need to purchase one and install it in your computer. You can obtain an Ethernet card from BCI or another vendor.
- 2) Once a cable outlet is installed in your desired location, hook up your cable modem and computer, according to the installation diagrams later in this document.
- 3) Set up your networking for BCI per the following instructions and **CONNECT TO THE WORLD!**

General Information

These instructions only apply to systems that meet the minimum requirements:

| | |
|-------------|---|
| OS: | NT 4.0 Service Pack (4)/2000 |
| Processor: | Pentium Processor (166) or other equivalents |
| Memory: | 16MB of RAM or greater |
| Hard Drive: | 500MB or greater |
| Video: | SVGA |
| Software: | Netscape 4.0/Internet Explorer 4.0 or other equivalents |

If your system doesn't meet the specifications, the instructions may not work for your computer and may cause other applications in your computer to fail. Before beginning the steps on network configuration below, you will need to have a **Network Interface Card** (NIC, Ethernet Adapter, etc.) installed in your computer with all drivers loaded. There should be installation instructions and drivers with the Ethernet card.

Important: You are responsible for your computer's configuration. Individuals who proceed assume full responsibility for equipment damage or application failures that may occur.

In many situations, the Windows NT/2000 CD-ROM will be needed to complete the configurations.

Window NT/2000 Setup instructions

Setup summary for Advanced Users:

- (a) For NT you will need to have a minimum of service pack (4) installed in

your system. You can download or order the CD at

<http://www.microsoft.com/networkstation/default.asp>

(b) Install a Network Interface Card (NIC), if your computer does not have one.

(c) Install the following components from Microsoft Networking:

TCP/IP and select **“Obtain an IP address from a DHCP server.”**

(d) If you are not a telco-return customer (do not use a telephone line for upstream)

Once your modem is linked, (3com: three green lights power, receive and link; Motorola Surfboard: four green lights power, receive, send and online)

Restart your computer.

If you are a telco-return customer (use a telephone line for upstream)

Power cycle the cable modem. After getting four green lights (power, receive, send and online) on the modem, restart your computer. (note: we need to provision your adapter address before you can connect.) In general a telco-return modem is a full LAN connection only after it dials in and links.

Detailed setup:

Installing a Ethernet Card For a Desktop:

Remove the cover from the system and find a free expansion slot to insert a card. If you have an ISA type NIC, it will plug into the long black slot (approximately 5 inches in length) on your systems board. If you have a PCI based NIC, it will plug into the short white slot on your system board (approximately 3 inches in length.) Insert the card and secure it into position. Replace cover, plug all of the cords back into their appropriate connections, and turn on the unit.

Installing a Ethernet Card for a Laptop:

For your Laptop installation, the NIC is known as a PCMCIA or PC card and it fits into the slender opening on the side of your laptop. This type of card is approximately an eighth or quarter of an inch thick, 2 inches in width and 4 inches in length. One end of the card will have approximately 15 tiny holes. This is the end that plugs into the laptop.

a) Note that there are three types of PCMCIA cards; Type 1, Type 2, and Type 3.

To insure proper operation, refer to your laptop manufacturer to see what type of PCMCIA card is best suited for your system.

- b) Refer to the PCMCIA card manufacturer's instructions on the driver installation of your card.
- c) Insert the card and secure it into position. After completion of the manufacture's instructions, plug all the cords back into their appropriate connections, and turn on the unit. (Note, your PCMCIA card may have an adapter cable that plugs on one end into the PCMCIA card, on the other end it will connect to the Category 5 Ethernet cable).

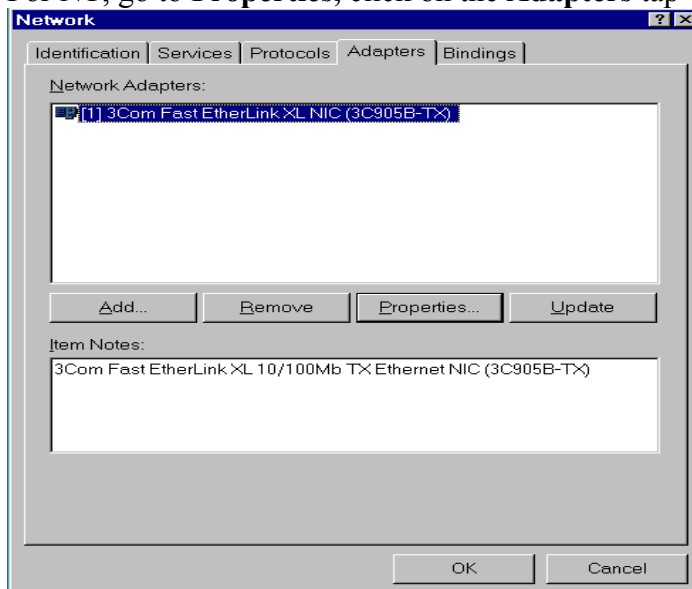
Software Portion of NIC installation:

The configuration for your version of Windows NT 4.x and 2000 software required to connect to Bardstown Cable Internet (BCI) is identical for both Desktop and Laptop computers.

Turn on the system. Note: when your system starts the hardware wizard could prompt you for a driver for the new hardware it found (your Ethernet card) if so follow the wizard and install your NIC. If not prompted go to **Start Settings and Control Panels**; find the **Network Icon** and open it.

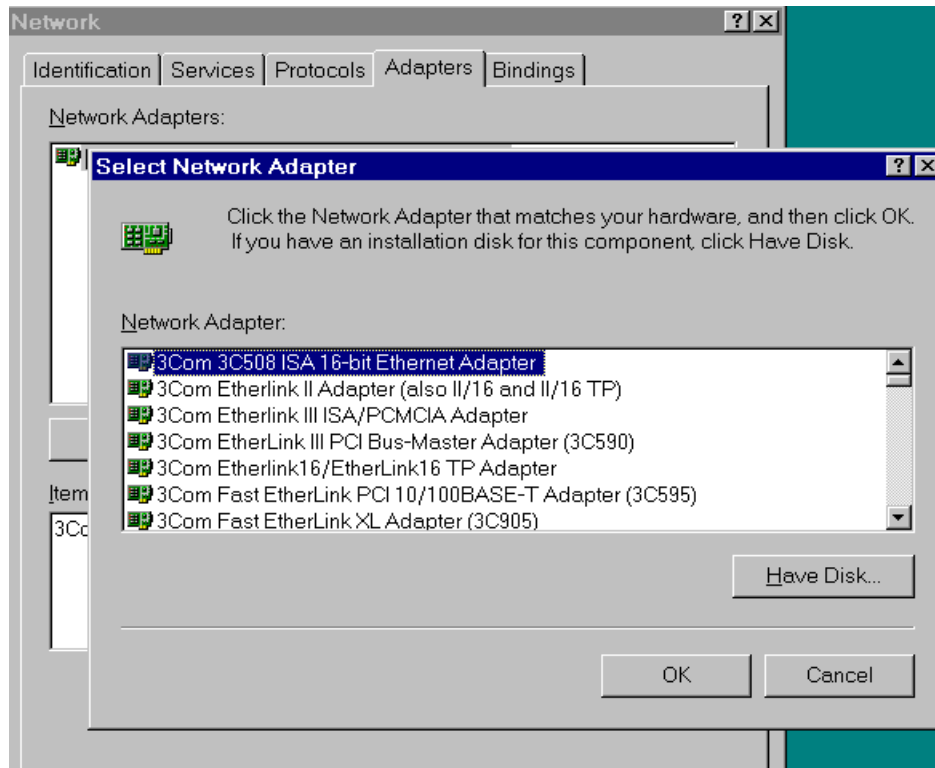
If networking has not been set up, you will be prompted to do so. Refer to your NT documentation for the proper installation of networking on your system. After installing reboot the machine.

For NT, go to **Properties**, click on the **Adapters** tap



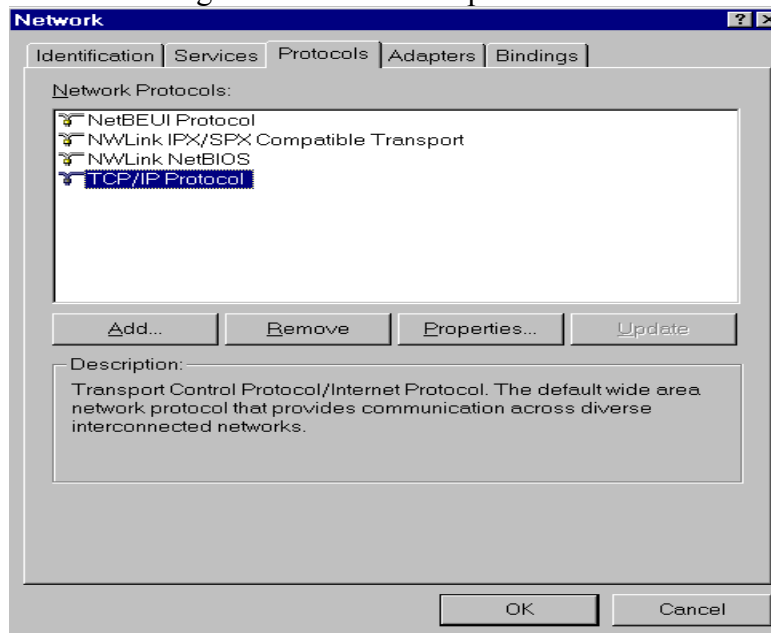
Nothing should be listed in this box if you are installing a new NIC, if there is, delete it and reboot.

Click **Add**. The Select Network Adapter will appear.



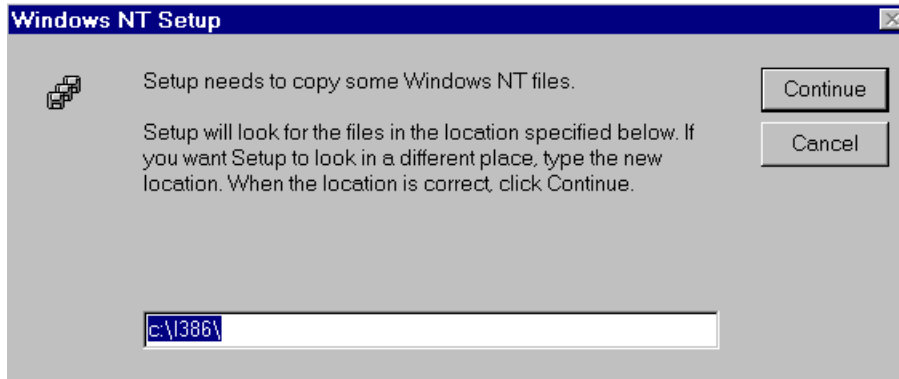
Insert the disk for the driver that comes with your NIC. Select **Have Disk**. You will get a new dialogue box make sure that **a:** is selected at the bottom and then click **OK**. The driver for the card will now install.

After the drivers finish installing, click on the protocols tab under the Network box. Click the Add button, select TCP/IP from the list of protocols to install and click OK to begin the install of this protocol.

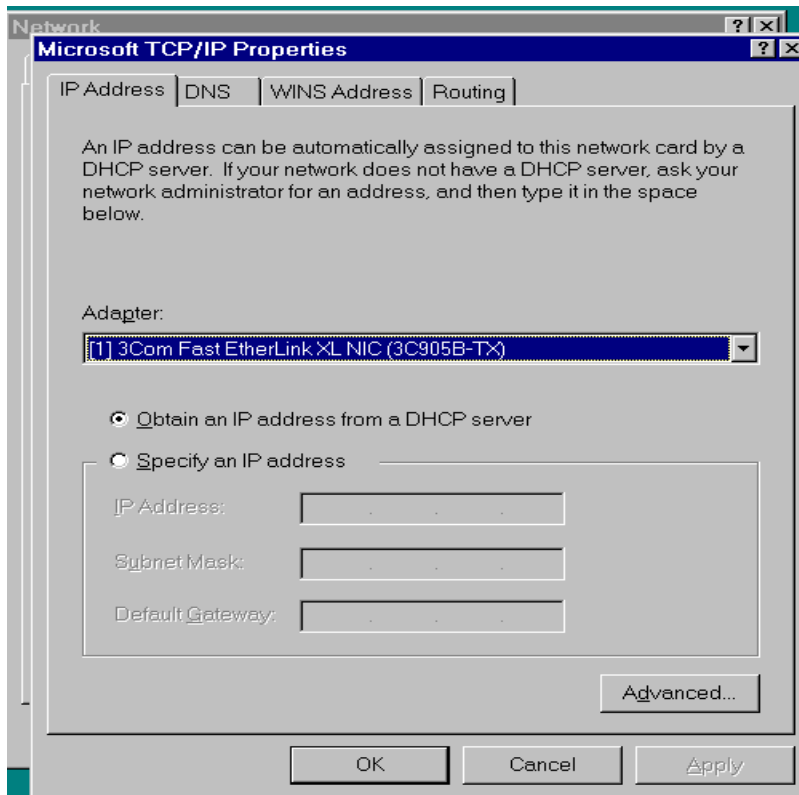


“When you are asked do you wish to use DHCP?” answer Yes

You will now be prompted to install the TCP/IP protocol. The following dialog box appears, insert your Windows NT 4.x disk click continue. This will install the protocol.

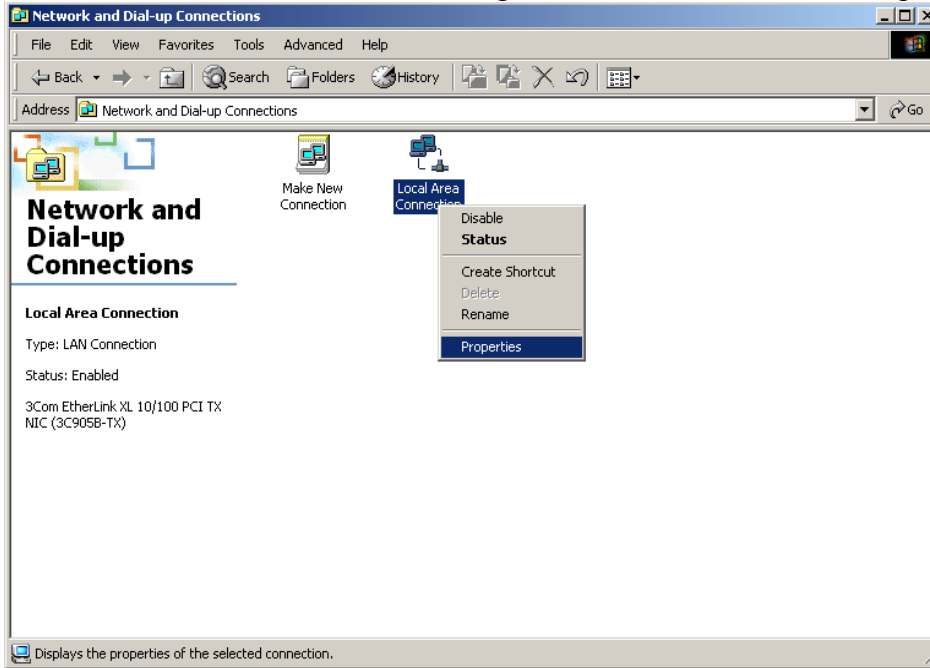


Highlight the new TCP/IP and click on the **Properties** button. Under the IP address tab, make sure there is a radio button in front of Obtain an IP address from a DHCP server.

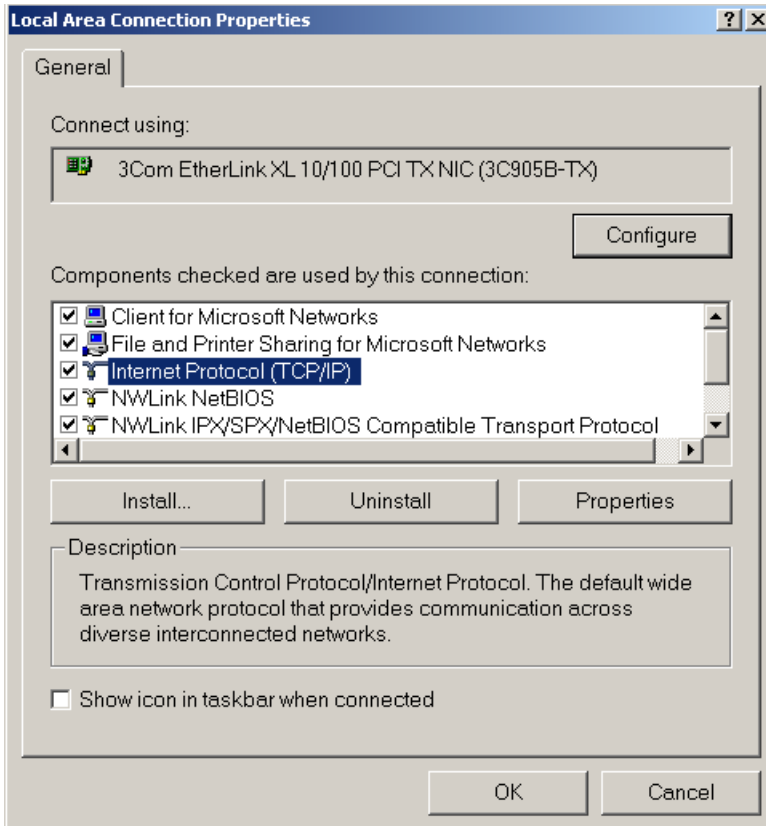


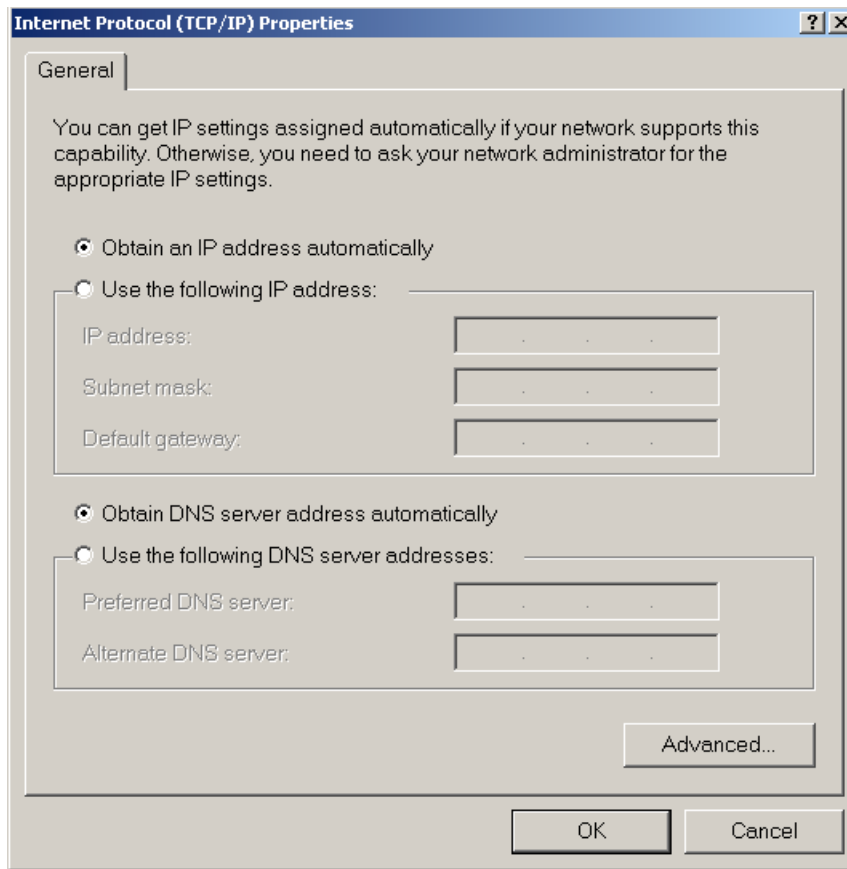
Nothing else needs to be configured or installed. Click **OK**. If prompted to restart the system, click **NO**.

Windows 2000 will have an icon for Network and Dial-up connections in the control panel; double click on the icon.
On the Local Area Connection icon, right click the icon and left click properties.



Select Internet Protocol (TCP/IP) and click on properties and make sure there is a radio button in front of Obtain an IP address from a DHCP server.





After changing these settings you will be prompted to restart. Make sure you have connected your computer and cable modem before restarting.

Connecting your computer and cable modem

From the wall plate in your room there will be a cable TV line, connected it to the back of the modem. Also, plug the Ethernet category wire to modem and the NIC card you just installed.



3com CMX Modem



Motorola Surf Board Modem
(note extra jack for telco-return)

Plug in the power cord and watch the LEDs on the modem as it goes through the “link-up” sequence.

NOTE: A 3Com CMX will have 3 green status lights on the left of the panel when linked to the headend and when a functional network device is attached. A Motorola Surfboard will have four green lights at the top of the front panel when linked to the headend. Another LED on the rear of the unit will be lit whenever a functional network device is attached.

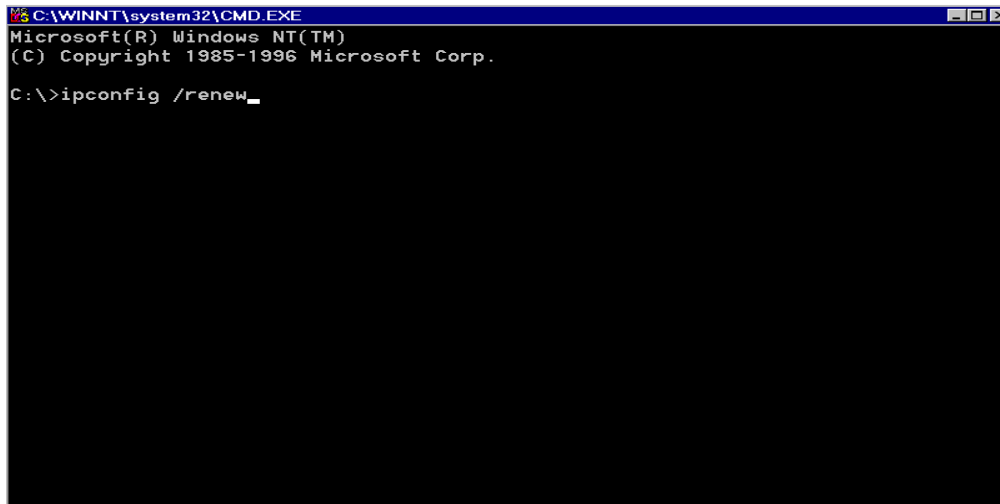
NOTE: Telco Return users have two options for establishing a session:

a) Power cycling modem each time (recommended; try using a separate power strip). **Do Not** start the computer until modem finishes dialing. Using the HTML based interface at 192.168.100.1 (from any web browser). See the cable modem manual for more information.

BCI IP addresses:

BCI uses dynamic private IP addresses and the following procedure outlines how to obtain the proper IP address or to check if your connection seems to have failed. Also if you plan to use a Laptop on other networks, you may need to follow the procedure below:

Go to a Dos window and type in the following from the C:\ prompt
IPCONFIG /RENEW and press enter.

A screenshot of a Windows command prompt window. The title bar reads "C:\WINNT\system32\CMD.EXE". The window content shows the following text: "Microsoft(R) Windows NT(TM)", "(C) Copyright 1985-1996 Microsoft Corp.", and "C:\>ipconfig /renew_". The cursor is positioned at the end of the command line.

```
C:\WINNT\system32\CMD.EXE
Microsoft(R) Windows NT(TM)
(C) Copyright 1985-1996 Microsoft Corp.
C:\>ipconfig /renew_
```

For your Laptop, this will renew your IP number from where the system was previously plugged into the network to your current location. Restarting the system has the same effect.

Setting up your email account

Email configuration is not detailed here. Please visit

<http://www.bardstowncable.net/email.html> for more details.

Outgoing Mail: mail.bardstowncable.net

Incoming Mail: mail.bardstowncable.net

Mail Server: pop3

For BCI web mail service visit:

<http://webmail.bardstowncable.net>