

Bardstown Cable Internet Self-Install Instructions

- 1) Check computer for an active Ethernet port or Ethernet Network Interface Card (NIC)
If you do not have a Ethernet port or Ethernet Network Interface Card (NIC), you need to purchase one and install it in your computer. You can obtain an Ethernet card from BCI or another vendor.
- 2) Once a cable outlet is installed in your desired location, hook up your cable modem and computer, according to the installation diagrams later in this document.
- 3) Set up your networking for BCI per the following instructions and **CONNECT TO THE WORLD!**

General Information

These instructions only apply to systems that meet the minimum requirements:

OS:	Windows 95/98/Me
Processor:	Pentium Processor (166) or other equivalents
Memory:	16MB of RAM or greater
Hard Drive:	500MB or greater
Video:	SVGA
Software:	Netscape 4.0/Internet Explorer 4.0 or other equivalents

If your system doesn't meet the specifications, the instructions may not work for your computer and may cause other applications in your computer to fail. Before beginning the steps on network configuration below, you will need to have a **Network Interface Card** (NIC, Ethernet Adapter, etc.) installed in your computer with all drivers loaded. There should be installation instructions and drivers with the Ethernet card.

Important: You are responsible for your computer's configuration. Individuals who proceed assume full responsibility for equipment damage or application failures that may occur while or after they work on their computer.

In many situations, the Windows CD-ROM will be needed to complete the configurations. You must have your original copy of Windows 95/98/Me and the certificate of authenticity which accompanies the software. Windows 95/98/Me installation software may be on your computer's hard drive. Some manufacturers place needed software on the hard drive of the computer bypassing the need for the media disk. If prompted for the CD-ROM during setup, attempt these locations for the needed files:

C:\windows
C:\windows\system
C:\windows\system\precopy

C:\windows\options\cabs

C:\windows\help

If the necessary files are not located in these locations, the Windows media disk will be needed to complete the configuration.

Windows 95/98/Me setup

Set up summary for advanced users:

- (a) Install network interface card (NIC).
- (b) Select the **Enhanced mode (32 bit and 16 bit) NDIS** button in the driver tab of the NIC **Properties** (if necessary.)
- (c) Install **TCP/IP** from windows networking components set on **Obtain IP address Automatically**.
- (d) If you are not a telco-return customer (do not use a telephone line for upstream)

Once your modem is linked, (3com: three green lights power, receive and link; Motorola Surfboard: four green lights power, receive, send and online)

Restart your computer.

If you are a telco-return customer (use a telephone line for upstream)

Power cycle the cable modem. After getting four green lights (power, receive, send and online) on the modem, restart your computer. (note: we need to provision your adapter address before you can connect.) In general a telco-return modem is a full LAN connection only after it dials in and links.

Detailed Setup:

Installing a Ethernet Card For a Desktop

Remove the cover from the system and find a free expansion slot to insert a card. If you have an ISA type NIC, it will plug into the long black slot (approximately 5 inches in length) on your systems board. If you have a PCI based NIC, it will plug into the short white slot on your system board (approximately 3 inches in length.) Insert the card and secure it into position. Replace cover, plug all of the cords back into their appropriate connections, and turn on the unit.

Installing a Ethernet Card for a Laptop

For your Laptop installation, the NIC is known as a PCMCIA or PC card and it fits into the slender opening on the side of your laptop. This type of card is approximately a quarter of an inch thick, 2 inches in width and 4 inches in length. One end of the card will have approximately 15 tiny holes. This is the end that plugs into the laptop. (Note: if your Laptop is new it could be Ethernet ready, check with your vendor or manufacturer.)

- a) Note that there are three types of PCMCIA cards; Type 1, Type 2, and Type 3. To insure proper operation, refer to your laptop manufacturer to see what type of PCMCIA card is best suited for your system.
- b) Refer to the PCMCIA card manufacturer's instructions for the driver installation of your card.
- c) Insert the card and secure it into position. After completion of the manufacture's instructions, plug all the cords back into their appropriate connections, and turn on the unit. (Note, your PCMCIA card may have an adapter cable that plugs on one end into the PCMCIA card. On the other end it will connect to the Category 5 Ethernet cable.)

Software portion of NIC installation

The configuration of the 95/98 or Me software required to connect to Bardstown Cable Internet (BCI) is identical for both Desktop and Laptop computers.

Do not proceed past this point unless you have physically installed the NIC. Proceeding beyond this point without the physical card installation may result in damage to your system. If your system deviates from any of the following instructions at any point, it is recommended that you consult the documentation that comes with your NIC.

When your version of win 95/98/Me loads, the hardware wizard will show on the desktop, "**Windows has found a new hardware**", the NIC, and will install drivers for the card. Select "**Driver provided by Manufacturer**", when the dialogue box asks for the driver for the NIC. Insert the disk(s) that came with the NIC and select **A:\drive** when the hardware wizard prompts you for manufacturer disk. Windows will now load the drivers from the disk for the NIC.

You might be prompted to insert your operating system disk for particular file(s), which in this case insert your windows 95/98 or Me disk. If you don't have you disk try the different locations mentioned previously in General Information.

After this procedure you must reboot your computer, even if you are not prompted.

Connecting your computer and cable modem

There will be a cable TV line installed at the desired location that needs to be connected to the back of the modem. Also, plug the Ethernet Category 5 wire between the modem and the NIC card you just installed.



3com CMX Modem



Motorola Surf Board Modem
(note extra jack for telco-return)

Plug in the power cord and watch the LEDs on the modem as it goes through the “link-up” sequence.

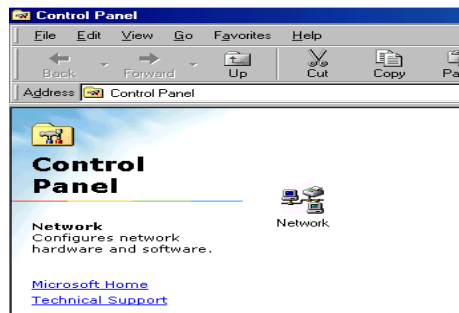
NOTE: A 3Com CMX will have 3 green status lights on the left of the panel when linked to the headend and when a functional network device is attached. A Motorola Surfboard will have four green lights at the top of the front panel when linked to the headend. Another LED on the rear of the unit will be lit whenever a functional network device is attached.

NOTE: Telco Return users have two options for establishing a session:

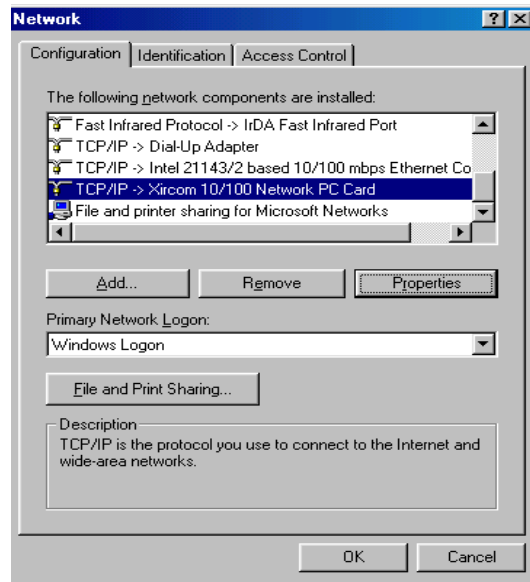
- a) Power cycling modem each time (recommended; try using a separate power strip). **Do Not** start the computer until modem finishes dialing.
- b) Using the HTML based interface at 192.168.100.1 (from any web browser). See the cable modem manual for more information.

Networking setup for BCI

Turn on the system and go to **Start, Settings and Control Panel**. Find the Network Icon and open it.



If networking has not been set up, this will bring up a list of components in Network configuration window. Look for an entry that includes the network adapter itself installed in your computer. For example the entry for the Xircum 10/100 Network card is shown in the screen image.

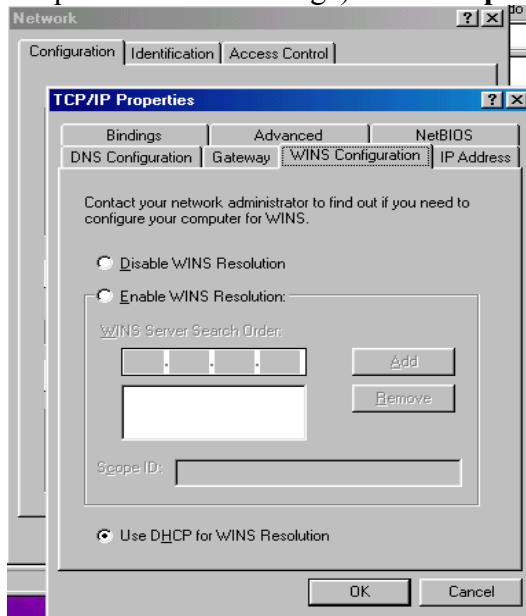


If a TCP/IP entry similar to the above is present, skip the next step.
If a TCP/IP entry similar to the above is not present, in the **Network window**, **click Add**. Click **Protocol**, and then click **Add**.



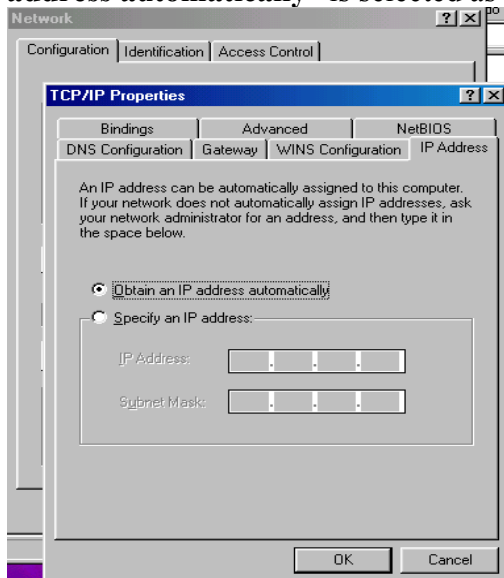
Select **Microsoft** in the “Manufacturers:” list and then click TCP/IP in the “Network Protocols:” list. Click **OK**.
“TCP/IP” will appear in the list of installed network components. Click **OK**.
If asked to restarts, click **NO**.

Select the entry that corresponds to the network card adapter installed on your computer (for example the entry for the Xircum 10/100 Network card as shown in the previous screen image) and click **properties** button.



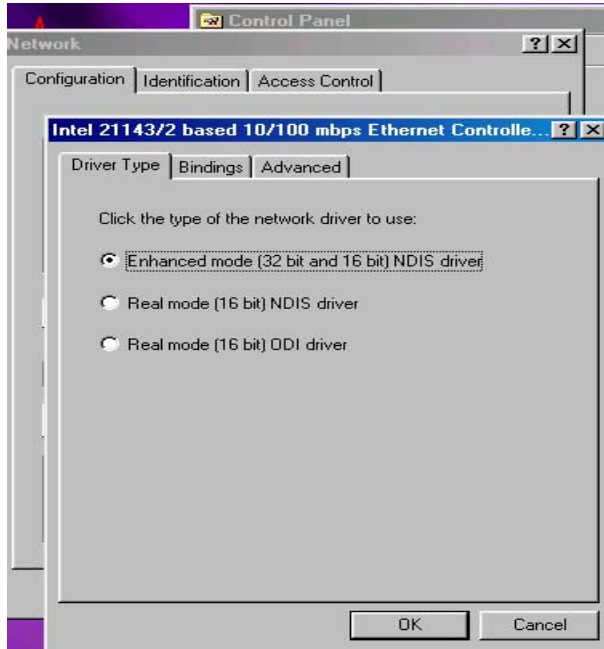
Click the **WINS Configuration** tab and select use **DHCP for WINS Resolution**, or select **Disable Wins Reselotion** if you don't use this feature.

Then click on the **IP address** tab. Make sure the button beside “**Obtain IP address automatically**” is selected as shown below:

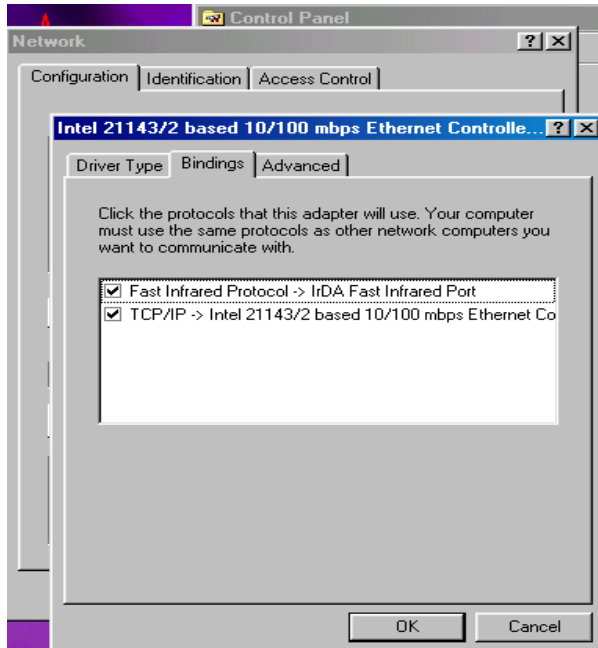


Once you have completed the TCP/IP properties, click **OK**. This will return you to the Network window.

Highlight the entry containing just your network adapter and click **Properties**. Click the **Driver Type** tab and select “**Enhanced mode (32 bit and 16 bit) NDIS driver**”.



Click the **Bindings** tab and make sure that the TCP/IP protocol box is checked click **OK**.

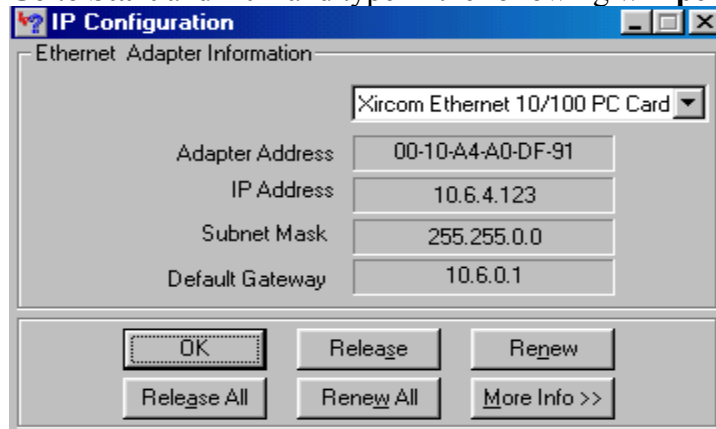


CONGRADULATIONS! Setup is complete. Click **OK** and you will be prompted to restart your computer, do this now.

BCI IP addresses

BCI uses dynamic private IP addresses and the following procedure outlines how to obtain the proper IP address or to check if your connection seems to have failed. Also if you plan to use a Laptop on other networks, you may need to follow the procedure below:

Go to **Start** and **Run** and type in the following **winipcfg**.



Select the Ethernet adapter you installed (use the drop down menu) then click on **release** to release your old IP configuration. Then click on **renew** to get your new IP configuration.

You should see the following IP addresses in the IP Configuration window:

63.144.115.___

65.118.16.___

65.118.17.___

65.118.18.___

or

65.118.19.___

If not, click on Renew and Ok. If you still can't access the Internet, call Bardstowm Cable Internet .

Setting up your email account

Email configuration is not detailed here. Please visit

<http://www.bardstowncable.net/email.html> for more details.

Outgoing Mail: mail.bardstowncable.net

Incoming Mail: mail.bardstowncable.net

Mail Server: pop3

For BCI web mail service visit:

<http://webmail.bardstowncable.net>